

Tideway Foundation adapter for BMC Atrium CMDB 2.0

Overview

Tideway Foundation provides a complete anatomy of Business Applications, their enabling infrastructure, and how they support business processes. When integrated with the market-leading BMC Atrium CMDB, the combined offering becomes the very cornerstone to implementing IT best practice frameworks such as ITIL or COBIT.

Tideway Foundation models business applications, and maps them to its view of the underlying infrastructure components. Through continuous indexing of the data center, this mapping is always up-to-date. This CI and dependency information is automatically populated into the Atrium CMDB, minimizing initial CMDB deployment time. Subsequently, the accuracy of this information is maintained through regular updates. Newly indexed or changed configuration information is automatically reconciled with pre-existing data.

How it works

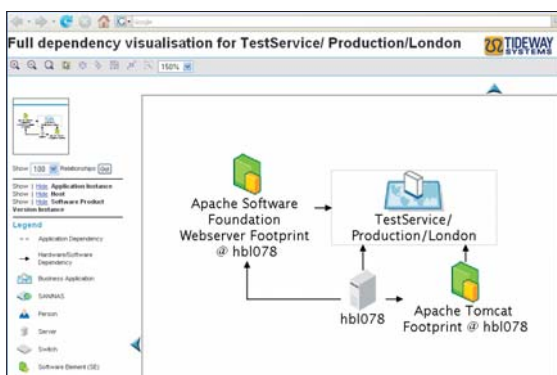
Tideway Foundation Adapter for BMC Atrium CMDB auto-populates and maintains the Atrium CMDB with configuration items from Foundation – such as networks, servers, software products, and business applications as well as the dependencies between any of them. The update frequency can be anything from intra-daily to monthly, dependent upon requirements. To ensure only relevant information is stored in the CMDB, the set of exported CIs is fully configurable. Since the Foundation and Atrium data models are customizable, the mapping between the Tideway model and the Atrium data model is fully configurable. As a result, the adapter supports any modified Atrium data model. Exported sets of dependencies are constructed into service views or impact views to maintain a complete, up-to-date picture of a business application within the CMDB. This provides an instant understanding of the impact of a change or incident to any infrastructure component on any modeled business application. Changes to components of a business application can now be monitored for compliance to a set of pre-defined policies. The Tideway adapter communicates directly with the Atrium Server using the BMC Atrium CMDB 2.0.1 Java API to achieve robust data transfer.

Benefits

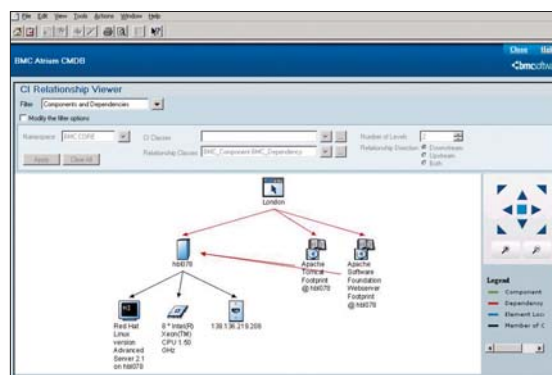
The combined Tideway Foundation and BMC Atrium CMDB solution provides a number of benefits:

1. Acceleration of CMDB roll-out for rapid-time-to-value through the automated population of configuration items and their key attributes in the CMDB.
2. Population of up-to-date service maps into the CMDB, providing business context for any IT component.
3. Generation of accurate and timely impact analysis reports for proactive management of change, reducing the number of incidents caused by errant change.
4. Increased data CI data quality in the CMDB at minimum cost.

Example Data Transfer



Application model in Tideway Foundation

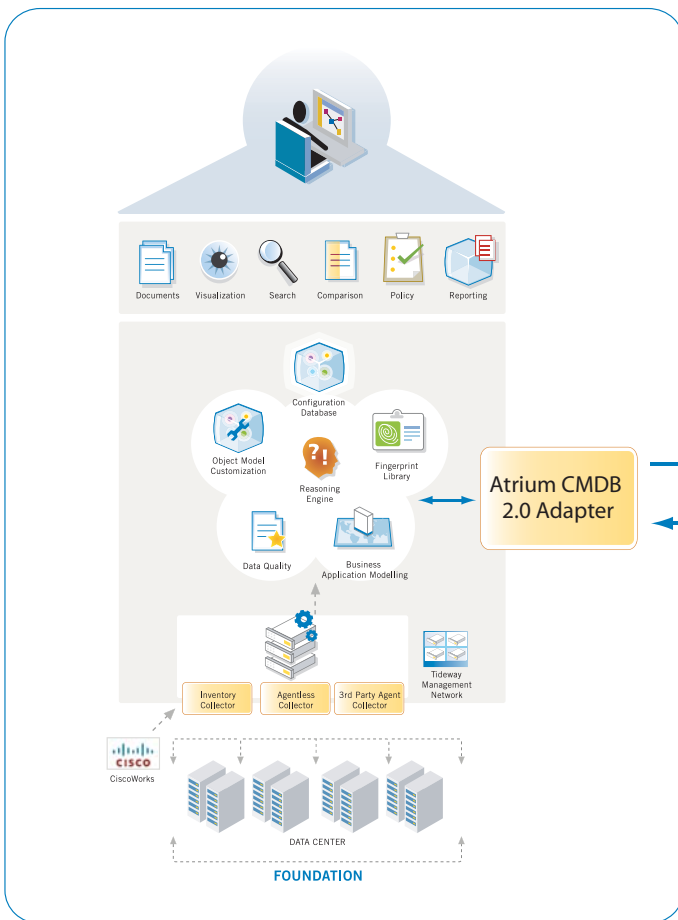


Same application data viewed BMC Atrium CMDB 2.0

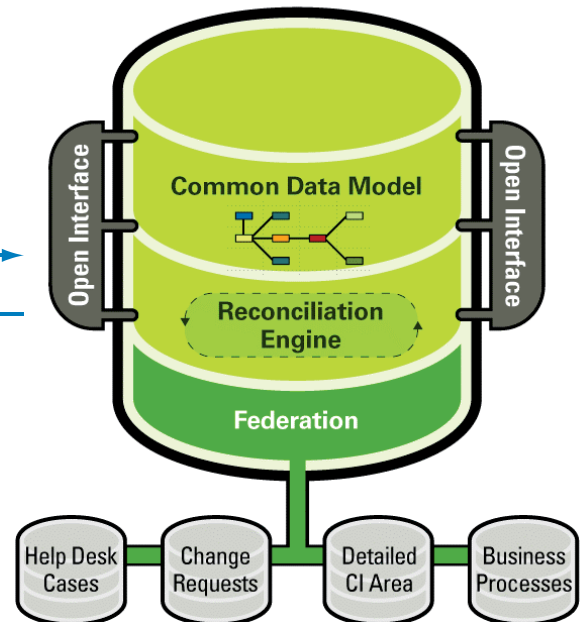
	Before	After
CI coverage	Integration of multiple data sources to build a complete picture of the application infrastructure	Single, fully maintained integration for maximum application infrastructure coverage
CI completeness	Variable numbers of data points with uncertain data provenance	Hundreds of automatically collected data points per CI
CI currency	Varying update frequencies per technology – often through monthly (or worse) manual processes	Configurable update frequency across all supported technologies – even intra-day

High-level Architecture

Tidway Foundation



BMC Atrium™ CMDB



General enquiries:

E. info@tidway.com

W. www.tidway.com

Support enquiries:

E. support@tidway.com